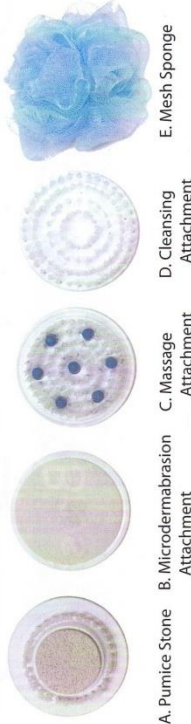


ATTACHMENTS/FEATURES:



A. Pumice Stone B. Microdermabrasion Attachment C. Massage Attachment D. Cleansing Attachment E. Mesh Sponge

A. Pumice Stone: Smooths rough and calloused skin. Use with light pressure. Limit use to 3-4 seconds at a time

B. Microdermabrasion Attachment: Exfoliates skin and can be filled with your favorite liquid soap (see below instructions)

C. Massage Attachment: Gentle cleaning and soothes aches and pains

D. Cleansing Attachment: Gentle Cleaning

E. Mesh Sponge: Gentle Exfoliation

NOTE: The Spin Spa is designed for use in the shower. Do not submerge or use in the bathtub.

Bathroom Hook

Spin Spa features a handy hook that you can use to hang the unit in or near the shower.

Make sure to affix the hook to a clean, smooth surface (such as tile), carefully avoiding any rough areas or grout. Make sure the hook is in the upright position and firmly press the suction cup (behind the hook) onto the surface. Pull the hook down as far as possible to lock the suction cup and hook in place (Images 1-4).



Image 1



Image 3



Image 2



Image 4

NOTE: To Fill The Microdermabrasion Attachment With Soap

1. Ensure unit is turned off.
2. Remove the attachment by pulling away from the handle.
3. Pull the plug out on the side of the head (see Illustration #1).
4. Pour in a small amount of your favorite liquid soap (see Illustration #2).
5. Secure the plug and reattach the attachment to the unit's head.

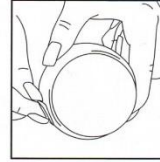


Illustration #1

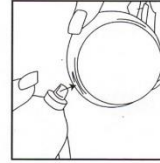


Illustration #2

INSTALLING/CHANGING THE BATTERIES:

Spin Spa requires three (3) AA Batteries

1. Push button A, then slide Battery door off to install batteries (see Illustrations #3 & #4).
2. Insert 3 new AA batteries.
 - Do not get water into battery compartment.
 - Do not open compartment while showering.
 - Be sure that you and appliance are completely dry before opening the battery door.
3. Slide the battery door back on, ensuring it slides under rails (B).

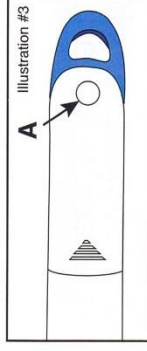


Illustration #3

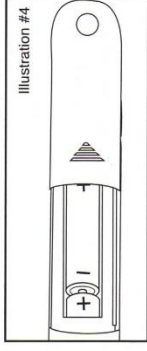


Illustration #4

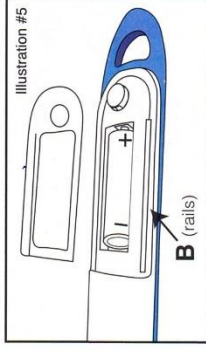


Illustration #5

USING YOUR SPIN SPA:

1. Align and attach the desired attachment to the **Spin Spa** Head (See illustration #6).
2. To change attachments, pull outwards (See illustration #7).
3. Apply soap to the brush attachment.
4. Press on/off button, to activate **Spin Spa** (See illustration #8).
5. Adjust speed by pressing the hi/low button (see illustration #9).

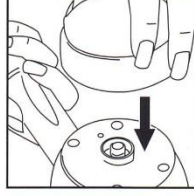


Illustration #6

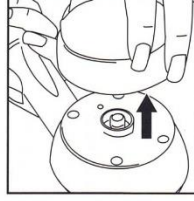


Illustration #7

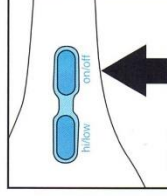


Illustration #8

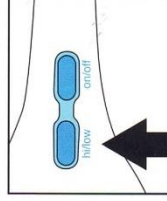


Illustration #9

CLEANING YOUR SPIN SPA:

1. Rinse soap from attachments with warm water after every use, allow attachments to dry completely before reattaching to the handle.
2. Wipe **Spin Spa** with a damp cloth.

USER MAINTENANCE INSTRUCTIONS:

- No lubrication is necessary. Keep all surfaces clean and free of dust, dirt or debris.
- If any malfunction occurs, DO NOT attempt to repair the unit. This appliance has no user-serviceable parts.

CAUTION:

1. Shower use only. Do not submerge! Not for use in bath tubs!
2. Supervision is recommended when this appliance is used by/on/ or near individuals with disabilities.
3. Use this appliance only for its intended use, as described in this manual. DO NOT use attachments that are not included in the Spin Spa offering.
4. Do not use this product if battery compartment is exposed or battery door is not fully installed.
5. Keep away from heated surfaces.
6. DO NOT mix old/new batteries.
7. DO NOT mix alkaline, standard, or rechargeable batteries.
8. Batteries must be recycled or disposed of properly.
9. Do not use on broken skin or areas of the skin with a rash, severe acne or other skin ailments.
10. Keep away from hair.

SAFETY FEATURE: To prevent damage, the attachments are designed to come loose & may fall off if too much pressure is applied.

SPIN SPA

Spinning Spa Brush

The Spinning Brush That Turns Showering Into A Spa Experience!



INCLUDED: 1 Pumice Stone, 1 Microdermabrasion Attachment,
1 Massage Attachment, 1 Cleansing Attachment, 1 Mesh Sponge
and a Bathroom Hook